

Version 2.0.36 Release Notes

Required components:

Microsoft .NET 3.5 Framework

Location of files:

Windows XP – C:\Documents and Settings\USER_ACCOUNT\Application Data\Irritrol

Windows Vista & 7 – C:\Users\USER_ACCOUNT\AppData\Roaming\Irritrol

How the software is organized:

Your irrigation data such as the number of controllers, zones, PIN value, and all your schedules are now stored in XML files instead of Flash “cookie” files. You can save your site file to any location on your computer, i.e. My Documents. The default location for all files, including your site file is specified above.

To commit changes to your file you must choose to save the file as you would any typical text file.

Using the .XML files:

If you simply want to view any of the XML files then double-click on the specific one and it will open in Internet Explorer for you to view.

If you want to make changes to any of the XML files then right-click on the specific one and choose “Open With.” Next, select a text program such as MS Word to open the file. You can use Notepad if needed, but the formatting is not easy on the eyes.

Menu options:

Tools –

- Communication Check to test communication between computer and controller(s)
- Check for updates
- PC Control Forums
- Help Manual (NOT present yet)
- Enable/Disable logging function
- Preferences –
 - Minimize to System Tray: Clicking on the minimize button will not close the software
 - Disable animations: For older computers that might slow down when refreshing the schedule
 - Prompt for default site: Upon starting up the software will always ask about the default site
 - Auto synchronize system and VCU clock: Whenever the remote is plugged in the controller’s time is updated. This is done automatically whenever a schedule is sent
 - Show zone numbers on zone buttons: Displays the zone number in the zone selector at the bottom, i.e. 1, 2, 3, etc.
 - Automatically save the site when sending schedule: Whenever the schedule is sent to the controller(s) the file is automatically saved
 - Automatically synchronize remote PIN on Open Site: Whenever a file is opened the PIN stored in the PIN is set in the remote
 - Default Site: Set a default site so that it will automatically open when the software is started

- Default start time: When creating a default schedule this is the time that the watering will start at

Panels:

Schedule –

- Create a new schedule, empty or default (10 minutes every zone)
- Open an existing schedule, click on the drop-down menu to choose a schedule
- Get the current schedule from the controller(s)
- Delete or rename an existing schedule
- Add/Remove events for zones
- Adjust runtimes by either dragging the bottom scheduled event up or down, or use the duration arrows
- Change the watering frequency

Advisor –

- Enter weather information
- Enter zone information such as sprinkler type, plant type, etc.
- Specify the earliest start time for an “Advisor set” zone

Settings –

NOTE: Any changes made on the Settings panel need to be committed by clicking the Apply button.

- Change the PIN in the entire system or only the remote
- Add/Remove additional controllers
- Add/Remove rain sensor setting, local – attached to specific controller, remote – use controller #1’s rain sensor
- Zone overlap – 0: No zones are allowed to overlap, 1: Two zones are allowed to overlap, 2: Three zones are allowed to overlap
- Global adjustments – Both, the season adjust and water restriction days affect all schedules and zones
- Advanced seasonal adjustments – Allows you to specifically adjust the currently open schedule and/or specific zones
- Water Restrictions – This option works best if you enable the restriction window on a new schedule before you add water or lighting events to it

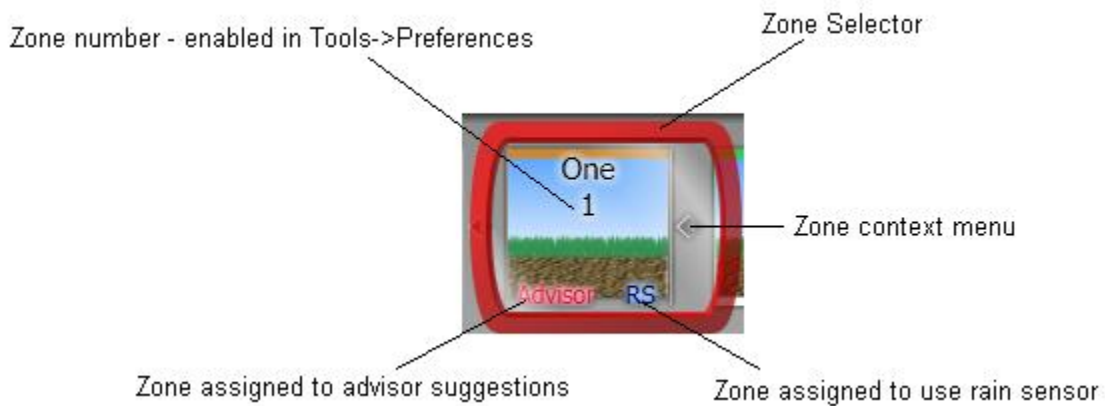
Manual –

NOTE: This panel is for multi-manual watering. If you like to run a single zone manually use the zone context menu mentioned below.

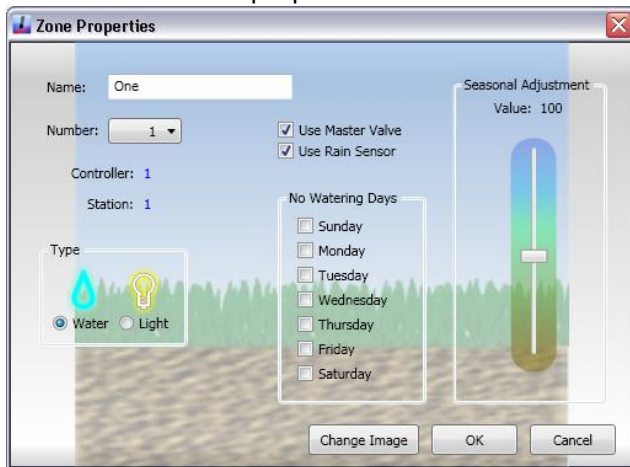
WARNING: If you have a multiple controller system, the multi-manual watering will turn on one zone per controller at the same time. This is due to each controller being seen as independent from the others.

- Create multi-manual watering lists
- Change runtimes for zones in each lists
- Add multiple watering events for the same zone.

Zones:



To access the zone's properties double-click on the zone:



Clicking on the zone context menu will display additional options:

- Run Zone: Single manual watering, must have remote plugged in



Getting Started:

New Users:

- Click on New Site
- Enter a PIN value (you can leave the PIN as 0000 but it is not recommended)
- Specify the number of controllers and zones you have
- If you changed the PIN value then click on the second checkbox, “Auto sync controllers with new PIN”
- Click OK
- When prompted to retrieve the configuration and schedule select “No”

Existing Users:

- Click on New Site
- Enter the PIN value for your system
- Specify the number of controllers and zones you have
- DO NOT check the “Auto sync controllers with new PIN”
- Click OK
- When prompted you can either choose to retrieve the current configuration and schedule in your controller(s) if you like.

New Site

Please enter name of new site:
New Site

Please enter the pin number of the Controller:
1000

Number of Controllers: 1
Number of Zones: 1

Auto sync remote with new PIN
 Auto sync controllers with new PIN*

* Scroll over to read Tool Tip first

OK Cancel

NOTE: Only to be used for new systems that still have the default PIN value 0000.

Changes:

You can also change the frequency on when the software polls the controller for status. The default is five seconds but the polling can be slowed down to 120 seconds (2 mins.). Click on Tools->Preferences.

There is a logging feature included in the software, but this needs to be first enabled before it starts writing data out to the file. If you want to enable the logging, click on Tools->Enable Logging. To turn it off click on Tools->Disable Logging. The files are stored in the Irritrol folder specified at the beginning on the release notes.

Each zone can be assigned independently to use the rain sensor setting.

Each zone can have multiple scheduled events that have different frequencies, i.e. Zone #1 waters every morning at 6:00 AM and on Wednesday at 7:00 PM also.

FAQ:

Q: Why does the Send button constantly flash?

A. Anytime you go back to the "Schedule" panel the schedule itself has to be refreshed which in turn updates the "Date Modified" tag for that specific schedule. This is what is causing the "Send" button to flash as it thinks the schedule has been updated, instead of just being refreshed. We are currently working on this so that the "Send" button only flashes for an actual schedule change.

Q: I have my remote plugged in but the signal bars in the top right are gray.

A. If the signal bars are gray then that means there is no communication between the software and the controllers. Verify that the PIN in the software, remote, and controller(s) is the same. Unplug the remote, wait until the USB symbol turns gray and then plug the remote back in. This usually will solve the issue, but on occasions this might need to be repeated two or three time.

Q: My software crashes when starting or opening a site.

A. Most likely, a necessary piece of information is missing in your file. This usually stems from an "<Event>" tag or a "<Zone>" tag missing in the file.

Open your file using the second option mentioned above (right-click->Open with->MS Word), and verify that the file is similar to the attached "ExamplePCControl.xml" file, especially the <Event> and <Zone> tags. If your file is missing these tags then most likely that is the cause of the software crashing. Unfortunately, your file is corrupted and it will probably be easier to recreate the file then to try to fix it. Close the file and delete it. Next, open the "Settings.xml" using the second option mentioned and delete any text between the "DefaultFileName" tags. Save the "Settings.xml" file, and when prompted about saving the data choose "Continue" or "OK."

Start the software and choose "New Site." Enter the name for you site and the current PIN that is in your controller. You do not need to specify the number of controllers or zones if this is an existing PC Control system you have installed, and you can ignore everything else on in the dialog window. Click "OK." Once

communication has been established with the controller(s) you should be prompted with a dialog window asking if you want to retrieve the current configuration in the controller(s), click "OK/Yes." The next prompt will ask if you want to the configuration, again click "OK/Yes." Finally, the software will prompt you to retrieve the schedule from the controller(s) and if you want to use it. Click "OK/Yes" to both of these prompts. Finally, once your configuration and schedule has been retrieved, click on "Save As" and choose the location you would like your site file saved.

TROUBLESHOOTING:

If the software crashes when starting or opening a site:

Most likely, a necessary piece of information is missing in your file. This usually stems from an "<Event>" tag or a "<Zone>" tag missing in the file.

Solution:

Open your file using the second option mentioned above in the "Using the .XML Files" (right-click->Open with->MS Word), and verify that the file is similar to the "ExamplePCControl.xml" file, especially the <Event> and <Zone> tags. If your file is missing these tags then most likely that is the cause of the software crashing.

Your file is most likely corrupted and it will probably be easier to recreate the file then to try to fix it. Close the file and delete it. Next, open the "Settings.xml" using the second option mentioned and delete any text between the "DefaultFileName" tags. Save the "Settings.xml" file, and when prompted about saving the data choose "Continue" or "OK."

Start the software and choose "New Site." Enter the name for you site and the current PIN that is in your controller. You do not need to specify the number of controllers or zones if this is an existing PC Control system you have installed, and you can ignore everything else on in the dialog window. Click "OK." Once communication has been established with the controller(s) you should be prompted with a dialog window asking if you want to retrieve the current configuration in the controller(s), click "OK/Yes." The next prompt will ask if you want to the configuration, again click "OK/Yes." Finally, the software will prompt you to retrieve the schedule from the controller(s) and if you want to use it. Click "OK/Yes" to both of these prompts. Finally, once your configuration and schedule has been retrieved, click on "Save As" and choose the location you would like your site file saved.

In regards to the "ExamplePCControl.xml" file:

The file contains one controller with two zones, Zone 1 and Zone 2. In the file you should see only one schedule that has three events, one for Zone 1 and two events for Zone 2. Every single schedule in the file should be inside the "Schedules" tag and contain a "Schedule" tag. The same holds true for "Event" and "Events" tag inside each schedule. Every zone in the file should be inside the "Zones" tag and contain a "Zone" tag.