

## MAXI-FLO™ Bubblers

The MAXI-FLO™ Bubbler is a six outlet, pressure compensating emitter. Water is then transferred to the plant through distribution tubing (A250). The MAXI-FLO™ has a 1/2" female threaded base and screws onto a standard 1/2" nipple. The discharge rate/outlet remains constant regardless of how many outlets are used. Each outlet has a barbed horizontal connection making it extremely simple to attach the tubing after installation.



**MFBL2**  
2 gph  
(BLUE)



**MFBL6**  
6 gph  
(BLACK)



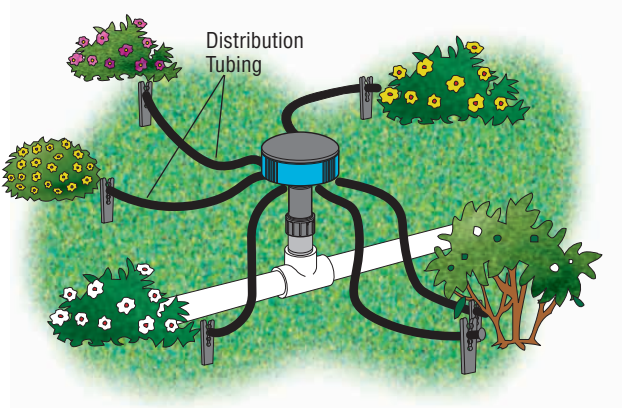
**MFBL10**  
10 gph  
(RED)



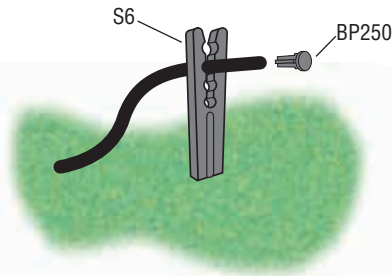
**MFBL20**  
20 gph  
(GREEN)



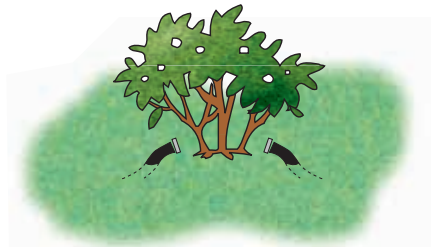
Distribution tubing, (A250) is simply pushed over the barb. For unused outlets, insert a port cap (PC250) over the barb.



All the MAXI-FLO's™ can be used for new installations or for retrofits. The 1/2" FIPT inlet allows it to easily attach to a 1/2" nipple in an underground PVC system. The MAXI-FLO™ can be used with distribution tubing (A250) or DURA-FLO™ JR Dripperline or a combination of both.



The end of the tubing may be secured by a support stake (S6). The bug plug (BP250) prevents insects from entering the tubing.



The distribution tubing (A250) can also be buried with just the emission point and the optional bug plug above the surface.

The MAXI-FLO™ is pressure compensating and can be used in the 20 to 80 psi range.

**Discharge Rates/Outlet**

	(BLUE)	(BLACK)	(RED)	(GREEN)
	MFBL2	MFBL6	MFBL10	MFBL20
<b>20 psi</b>	2.2 gph	5.7 gph	9.0 gph	16.4 gph
<b>30 psi</b>	2.4 gph	6.9 gph	10.4 gph	19.0 gph
<b>40 psi</b>	2.5 gph	7.7 gph	11.6 gph	22.1 gph
<b>50 psi</b>	2.6 gph	8.4 gph	13.1 gph	25.0 gph
<b>60 psi</b>	2.6 gph	9.1 gph	14.1 gph	26.7 gph
<b>70 psi</b>	2.6 gph	9.4 gph	14.8 gph	27.4 gph
<b>80 psi</b>	2.6 gph	9.5 gph	15.3 gph	28.2 gph

**Tubing Length Recommendation**

Distribution Tubing (A250)	25' max.	25' max.	25' max.	25' max.
DURA-FLO™ JR (12")	4' min. 10' max.	7' min. 15' max.	9' min. 18' max.	10' min. 22' max.
DURA-FLO™ JR (6")	2' min. 5' max.	3' min. 8' max.	5' min. 9' max.	5' min. 11' max.

When attaching the DURA-FLO™ JR Dripperline to the MAXI-FLO™, check the above chart for minimum and maximum length of run. The end of the DURA-FLO™ JR is sealed with a Goof Plug (GP2).



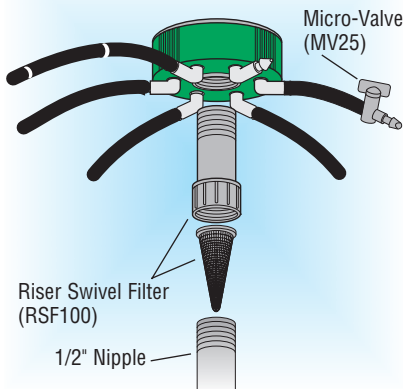
**MAXI-FLO™ Adjustable Bubblers**

The adjustable MAXI-FLO™ (MFBA) allows each outlet to be varied independently to achieve the optimum flow rate to a specific plant. The flow can be adjusted from 0 gph (shutoff) to a maximum of 20 gph.



fully open    partially open    closed

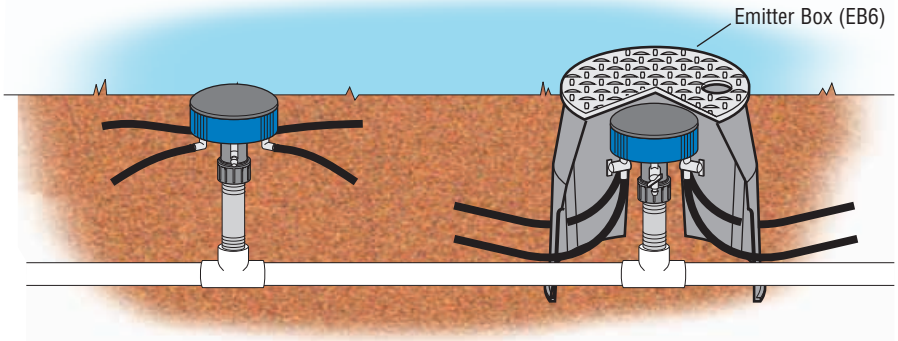
**MFBA**  
(0-20 gph)



The riser swivel filter (RSF100) has a 100 mesh screen for dirty water applications. It's swivel connection allows attachment or removal from the nipple without having to rotate the MAXI-FLO™ and distribution tubing. A micro-valve (MV25) may be used to reduce the discharge on any outlet.

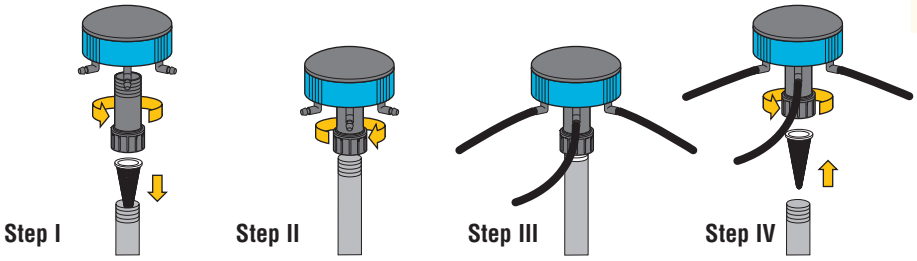


After attaching the tubing (A250), adjust each valve handle to the desired flow rate.



The MAXI-FLO™ can be installed in many ways, either at grade or below grade. Below grade applications are often used in conjunction with an emitter access box (EB6). The MAXI-FLO™ can be used with or without the riser swivel filter (RSF100).

The installation of the MAXI-FLO™ is extremely simple. Follow the instructions below.



**Step I**  
Screw the riser swivel filter into the base of the MAXI-FLO™.

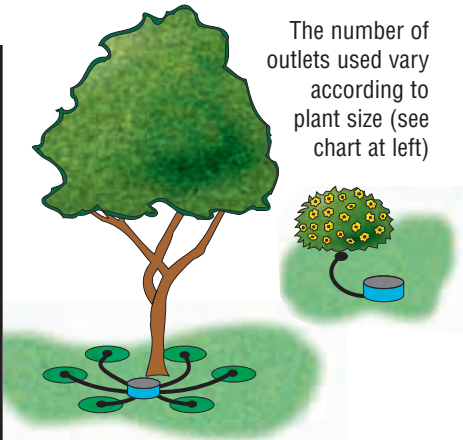
**Step II**  
Hand tighten the swivel on to the riser.

**Step III**  
Attach the tubing to the outlets.

**Step IV**  
To remove the MAXI-FLO™ to clean the screen, unscrew the swivel and remove the screen.

**MAXI-FLO™ Selection Chart**

RECOMMENDED MODEL	CANOPY DIAMETER	NUMBER OF OUTLETS PER PLANT
(BLUE) MFBL2	2 FT	1
(BLACK) MFBL6	3 FT 4 FT	1 2
(RED) MFBL10	5 FT 6 FT	2 3
(GREEN) MFBL20	7-9 FT	3
	10-12 FT	4
	13-15 FT 16-20 FT	5 6



The number of outlets used vary according to plant size (see chart at left)